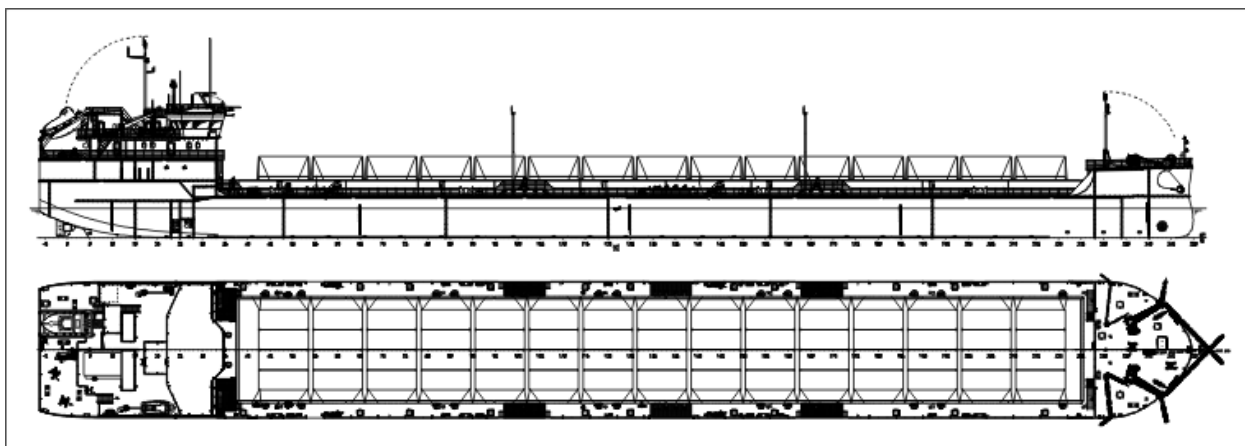


RST-54 type (first-in-type ship name "BALT FLOT 1")



Name	Shipyard, building number	Keel laying date	Launching date	Delivery date
Balt Flot 1	Oka SY, 5401	16.12.13	10.07.14	31.10.2014
Balt Flot 2	Oka SY, 5402	24.01.14	26.08.14	TBA
Balt Flot 3	Oka SY, 5403	05.03.14	TBA	TBA

1.	Main dimensions	
	Length overall, m	140.85
	Length by KWL, m	140.66
	Breadth	16.70
	Depth Moulded, m	5.00
	Height from BL to part of non-removable parts (not more than), m	16.10
	L x B x H	140.85 x 16.70 x 5.00 = 11 761
2.	Draught, m (in sea / in river)	3.60 / 3.527
3.	Deadweight in the river at draft 3.60 m, t	5589
4.	Height of cargo deck sides, m	2.00
5.	Volume of cargo space up to upper edge of hold, m ³	2564
6.	Capacity for dry/general cargo on deck (approx), t	4500
7.	Cargo and slop tanks capacity (98%), m ³	5653
8.	Endurance, days	20
9.	Russian River Register class	 M-PR 2,5 (ice30) A
10.	ME power and type	2 x 1200 kW, (6L20 "Wartsila")

RST-54 type (first-in-type ship name "BALT FLOT 1")

11.	Screw and Rudder	2 x 1200 kW, Rudderpropellers (Shottel SRP2012FP)
12.	Bow thruster	230 kW, (Schottel STT170FP)
13.	Auxiliary diesel-generators + Emergency diesel-generator	3 x 296 kW + 62 kW
14.	Auxiliary steam-boiler, t/h	2 x 2.5
15.	Cargo pumps output, m ³ /h	2 x 300
16.	Number of manifolds / Sorts of cargo	4 manifolds / 1 grade
17.	Cargo heating	Coils
18.	Slop tank pump, m ³ /h	80
19.	Crew / maximum accommodation, persons	12 / 14 + 1 pilot
20.	Speed (at draft 3.60 m and 85% MCR), knots	10.0